



**THE FIRST PERMANENT  
MULTI-CAMERA  
EXTENDED REALITY  
FILM SET IN SPAIN**



**16escalones**  
PRODUCCIONES  
16 ESCALONES



16 escalones FILM SET

THE TECHNOLOGY  
THAT HAS REVOLUTIONISED  
GLOBAL AUDIOVISUAL PRODUCTION  
**IS ALREADY HERE**



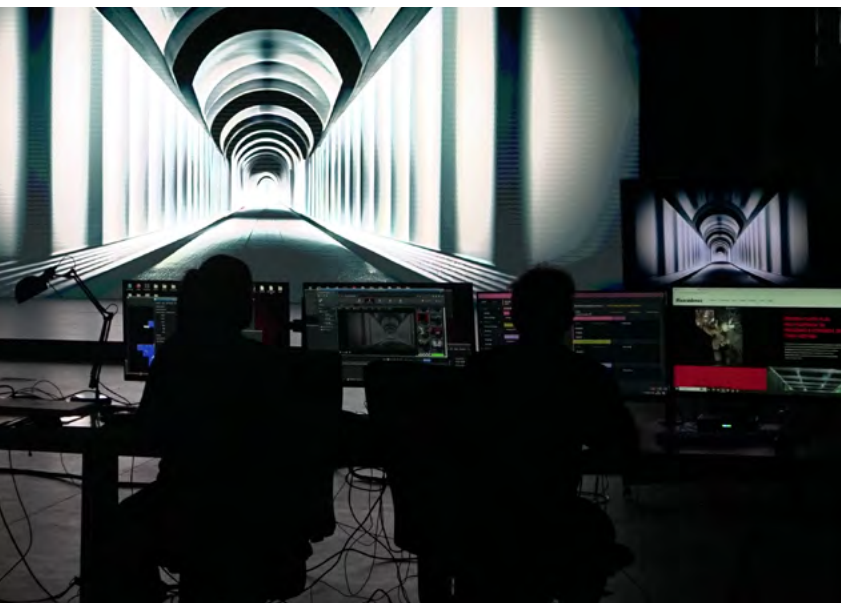
16 escalones FILM SET

DESDE ANDALUCÍA AL MUNDO  
FROM ANDALUCÍA TO THE WORLD

16escalones  
PRODUCCIONES

# PREMIUM EXTENDED REALITY TECHNOLOGY

**A permanent facility, the first of its kind in Spain, equipped with state-of-the-art screens and software** used in major productions such as "The Mandalorian" and "Thor: Love and Thunder." Alfalite, Pixotope and Tangram Solutions technology, global leaders in the sector. Officially certified for audiovisual content platforms (Netflix, Amazon Video and HBO).



16 escalones FILM SET



# MAXIMUM REALISM

**A totally immersive experience with results that are imperceptible to the eyes of the viewer.**

A 16 Escalones investment in the latest developments in the virtual sector. A unique film set in Spain and the country's first permanent, multi-camera extended reality studio.



**VP XR EXTENDED reality**



**Environment-friendly**



**Energy and resource savings**

## A VP XR SET DESIGNED TO PROVIDE PRODUCTION SERVICES FOR FILMS, SERIES, BROADCASTS, ADVERTISING AND HYBRID EVENTS

- VP XR extended reality.
- 40 m<sup>2</sup> 1.9 Led Wall (10-metre curved bottom and 4 metres high), with up to 1,900 nits, unique in the sector.
- A 3x5-metre high-brightness ceiling screen with 5,000 nits.
- ORIM® technology that provides a viewing angle of 175 horizontal and vertical degrees and protection against liquids.
- Full integration with Pixotope® software, a leading company in the sector.
- HW specific for Set Extension.
- A 3D environment, multi-camera system and unique AR/XR sequential flow and LUT import.
- ACES based colour management in accordance with Netflix specifications.
- Exquisite quality, brightness and colour at the pixel level, automated calibrations and high dynamic range.
- Control with HDR support, 18-bits, ultra-low latency, up to 7,680 Hz refresh rate frequency, supporting 86.2% of the REC.2020 colour space range, the highest on the market.
- Compatibility and versatility with Unreal, Unity and all 3D tools.
- Intuitive interface and 16K output by rendering engine, among other advantages.
- Official certification for audiovisual content platforms (Netflix, Amazon Video).
- Environmentally sustainable LED screens with the lowest consumption on the market, registering just 35 kW/h of average consumption per panel.

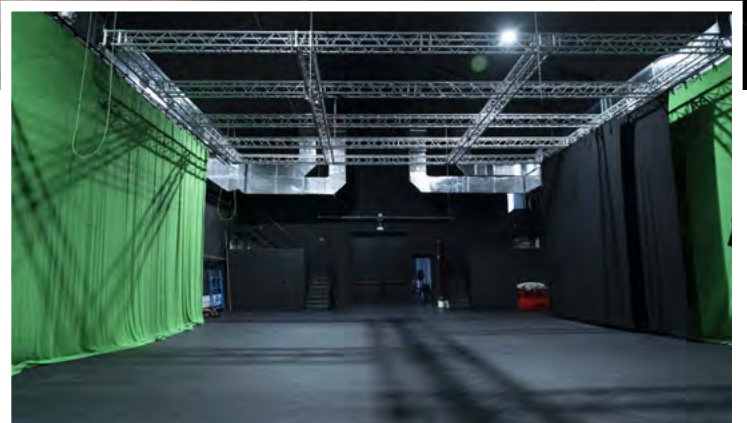




16 escalones FILM SET



# 450 M<sup>2</sup> OF STAGE SPACE



Ample space: 750 m<sup>2</sup> in total with an open-plan, clean, obstacle-free area of 450 m<sup>2</sup> in size. Soundproofing and a silent 142,416 fg air-conditioning system with free-cooling and black peripheral cyclorama technology.

**Do you need more space?** The set has an adjoining building that multiplies the possibilities of our facilities. Another 450 m<sup>2</sup> that can be used as storage space or converted into a construction workshop.



A 750 m<sup>2</sup>  
set



450m<sup>2</sup>  
of stage space



Air conditioning  
with free cooling  
technology

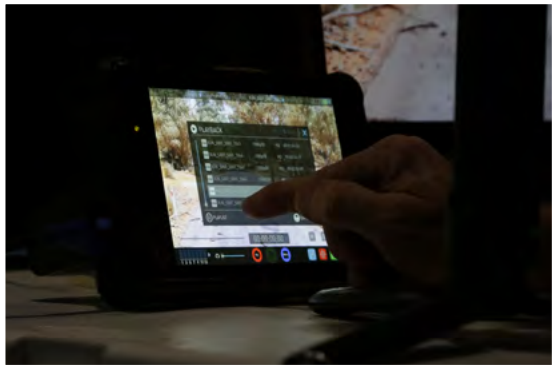


Black cyclorama  
around the entire  
perimeter



Endless green  
cyclorama

# 16 escalones FILM SET





16 escalones FILM SET



# SOUNDPROOFING

- Acoustic panels on the interior and exterior of the building ensure a fully insulated set designed to guarantee work goes ahead regardless of any inclement weather.
- A 2.5 m x 2 m acoustic door for pedestrian traffic and direct access to the offices.
- A 3 m x 3 m acoustic door for loading and unloading and vehicle entrance.



**Soundproofing**  
with an interior  
and exterior  
cladding



16 escalones FILM SET



# MULTI-PURPOSE AREAS

There are several multi-purpose areas and services located around the filming area:

- A hairdressing and make-up room (three hairdressing and three make-up stations, perfect lighting and comfort)
- Three dressing rooms (one VIP and two individual)
- A reception hall for the public and/or guests and a catering area equipped with self-service drinks machines.
- A tailor´s
- Toilets and auxiliary rooms



**300 m<sup>2</sup>**  
of additional  
multi-purpose  
areas





16 escalones FILM SET



VIP dressing room



Individual dressing rooms



Hairdressing and make-up room

16 escalones FILM SET



# OTHER TECHNOLOGY AND EQUIPMENT

State-of-the-art technology with a production control area and editing rooms connected to the production and autonomous sound control units.

- An area in which to control cameras for live broadcasting or to record programmes, featuring all the latest cutting-edge equipment with lighting, video, digital, computer and audio supervision.
- Three editing rooms connected to the production room for dialogue controls and sound editing. These rooms are connected in a secure LAN environment and can support any format, sample rate and bit depth.
- 600 m<sup>2</sup> of first-rate, fully equipped office facilities located on three floors connected by a lift.
- A soundproofed audio studio for voice-overs, dubbing, sound tests and miscellaneous audiovisual applications.



**Production  
control**



**600 m<sup>2</sup>  
of office space**





# 16 escalones FILM SET



Production control



Set sound control



Soundproofed audio studio

Meeting room



Newsroom



16 escalones FILM SET



# TECHNICAL MEANS AND CUSTOMISED LIGHTING

We provide customised technical equipment in accordance with the client's needs. Ask us for a personal quote or more information, or schedule a visit.





16 escalones FILM SET



CINEMA

TELEVISION



EVENTS

VIRTUAL REALITY

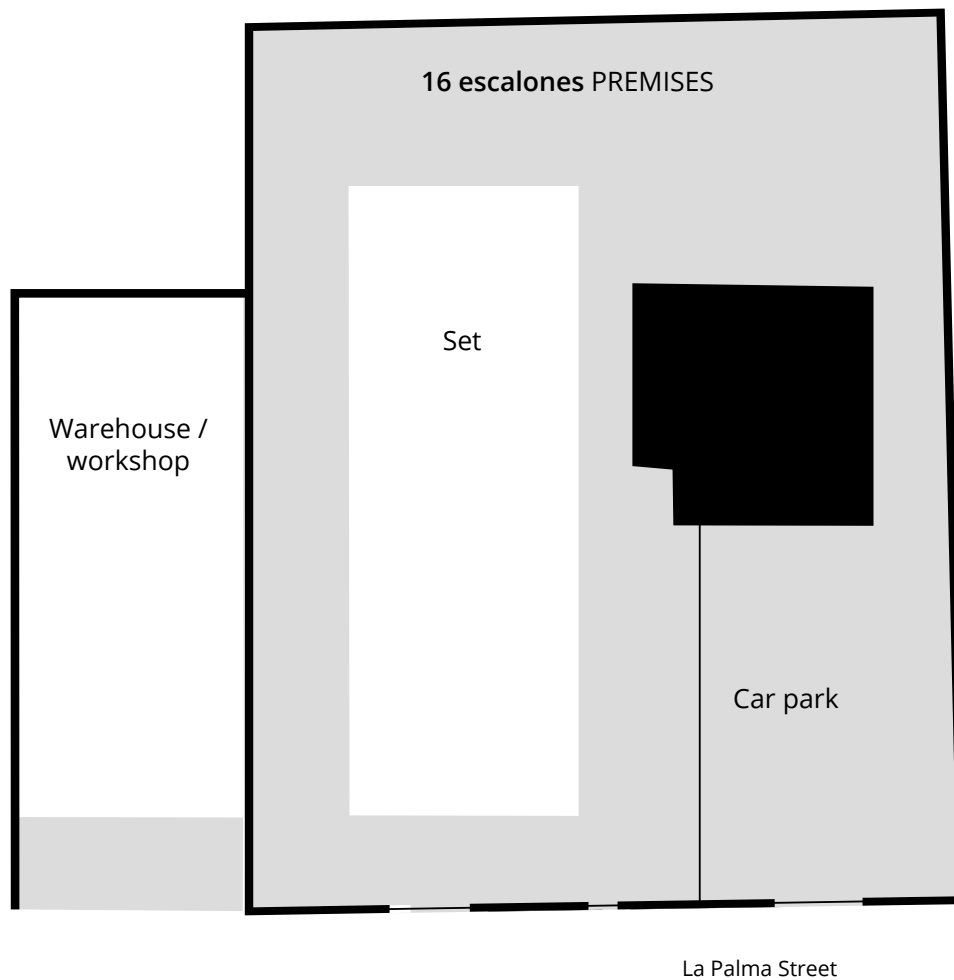
ADVERTISING





# BLUEPRINTS

## Layout of the premises



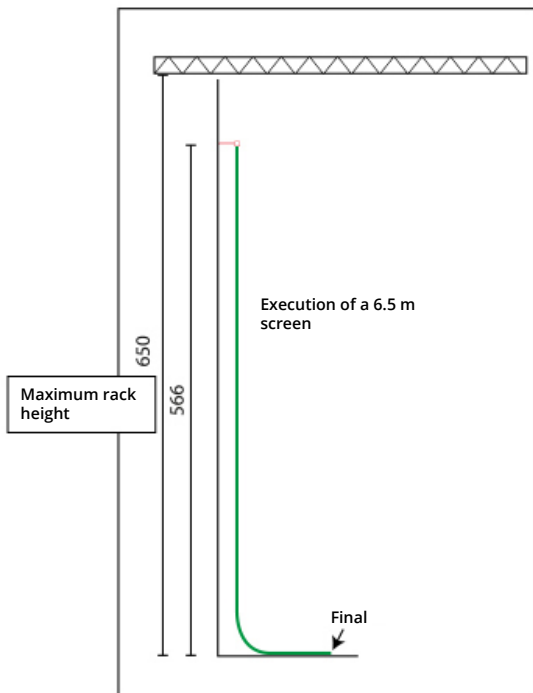
### Adress

La Palma, 4  
P.I. La Palmera  
Dos Hermanas  
41703 Sevilla  
SPAIN

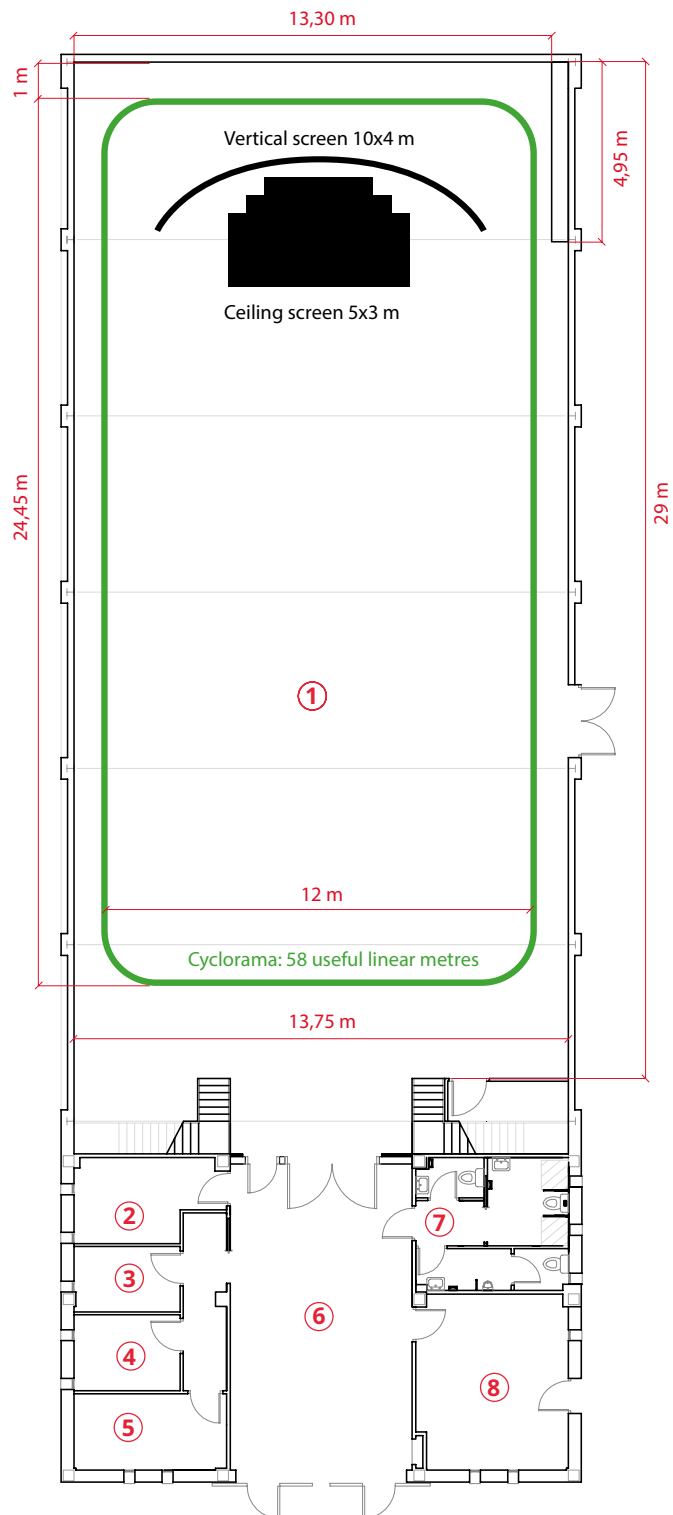


# BLUEPRINTS

## Ground floor set



Execution of a vertical cyclorama

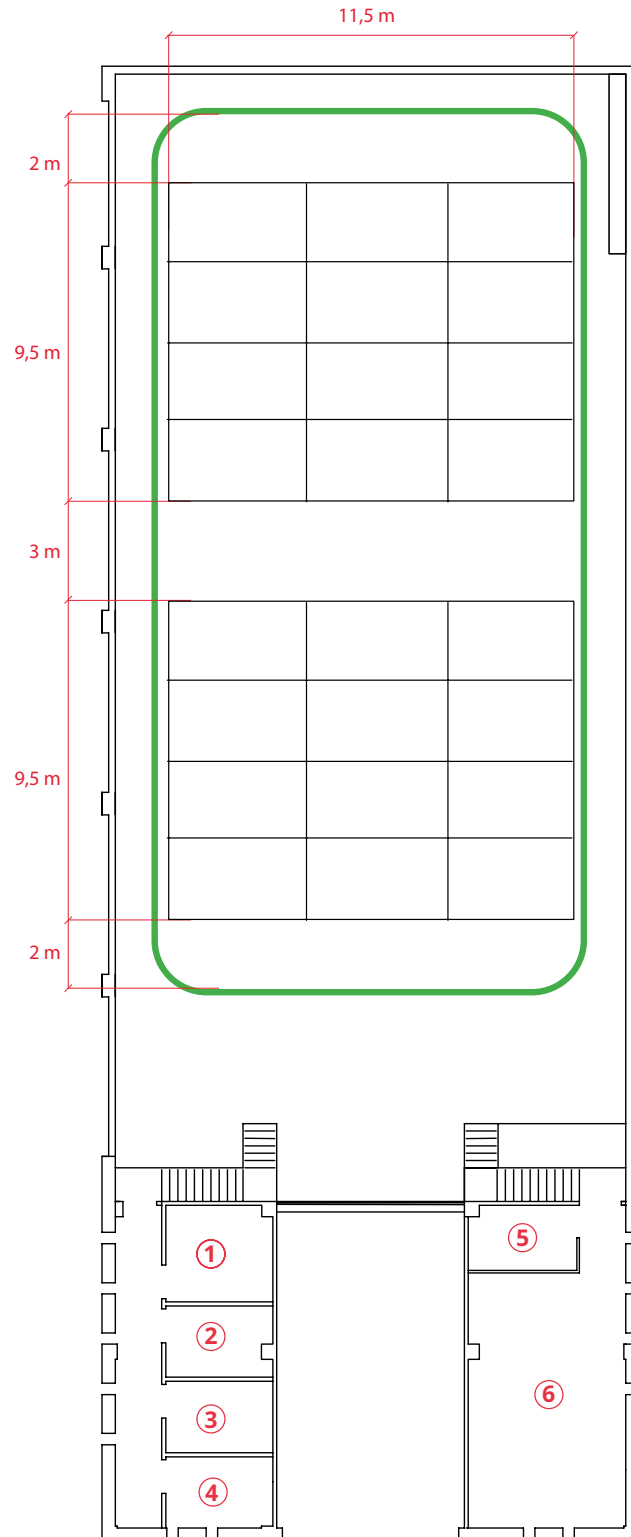


On-site execution

1. Set
2. Mechanical room
- 3 and 4. Individual dressing rooms
5. VIP dressing room
6. Hall
7. Toilets
8. Make-up and hairdressing room

# BLUEPRINTS

## First floor set



1. Sound control

2, 3 and 4. Editing rooms

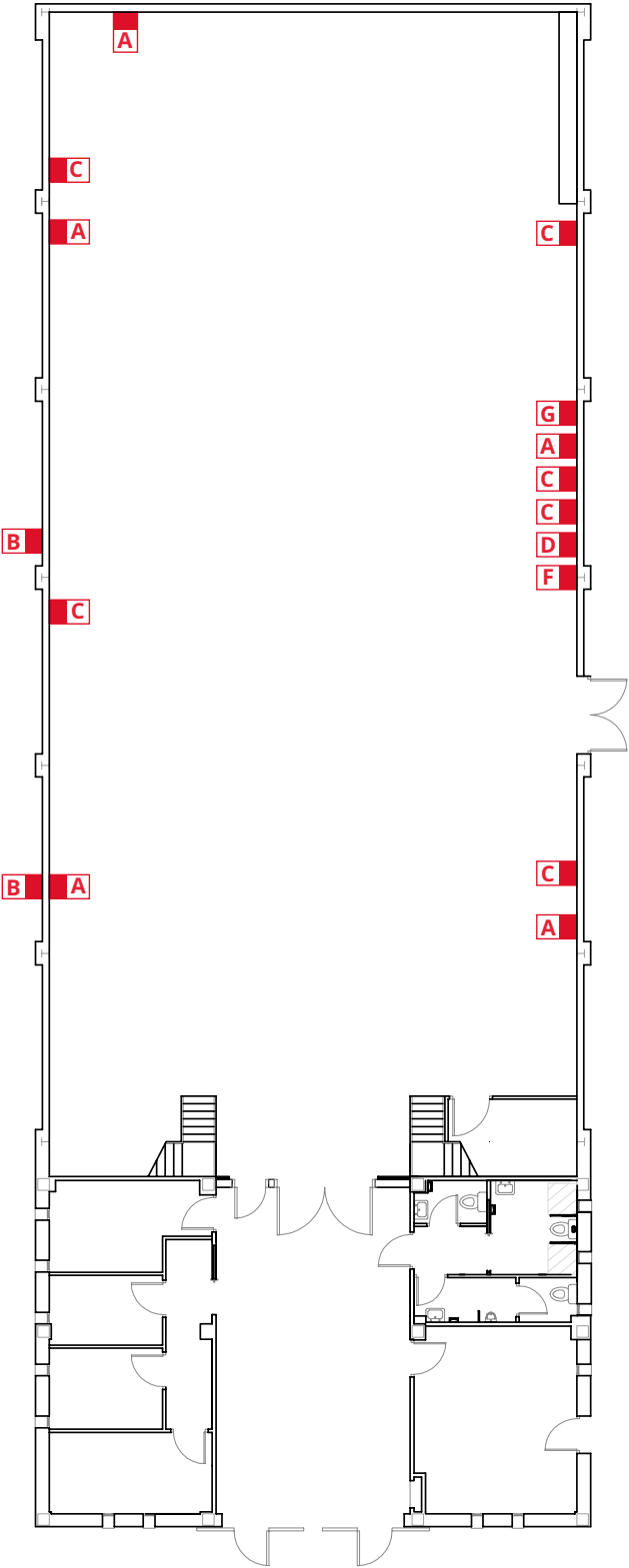
5. Rack

6. Control and direction



# BLUEPRINTS

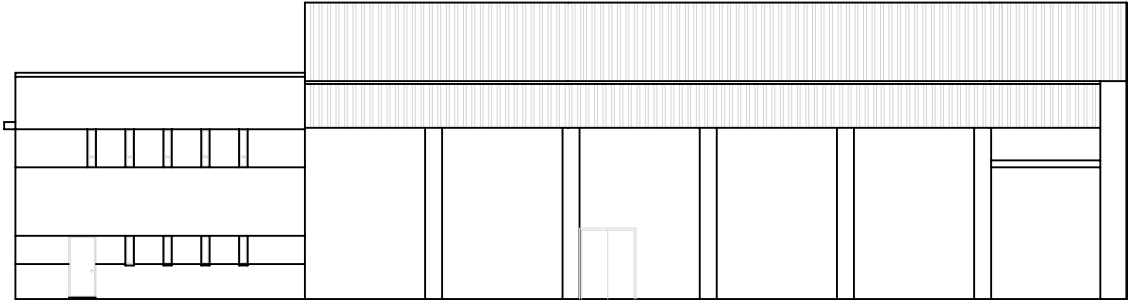
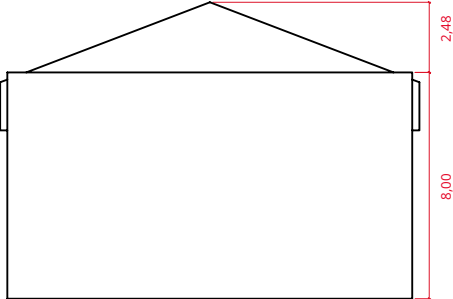
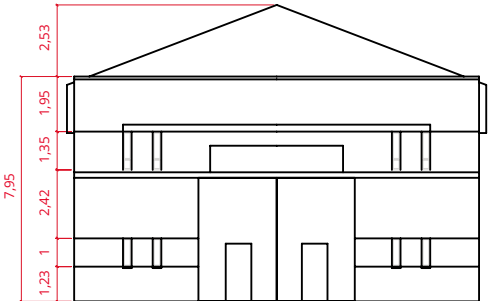
## Connections



- 
- A.** Lights
  - B.** Heating
  - C.** Sound and video
  - D.** Rack motors
  - E.** 5 kw rack connections
  - F.** Video production and intercom control connections
  - G.** 32A three-phase sockets (not currently active)

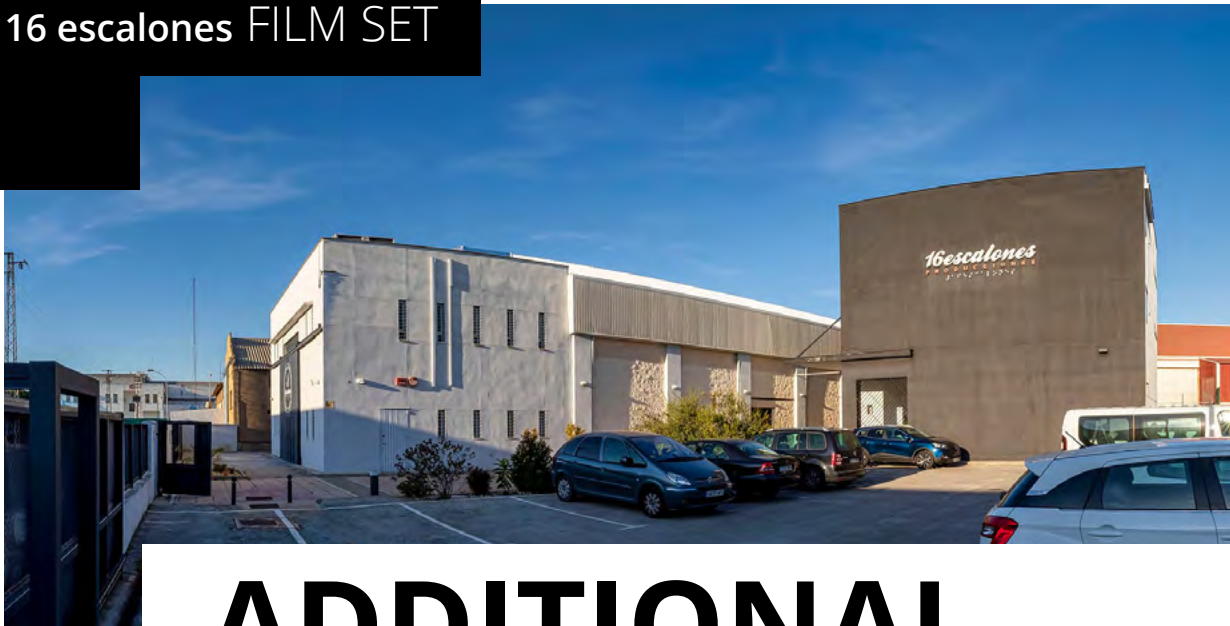
# BLUEPRINTS

## Raised set





16 escalones FILM SET



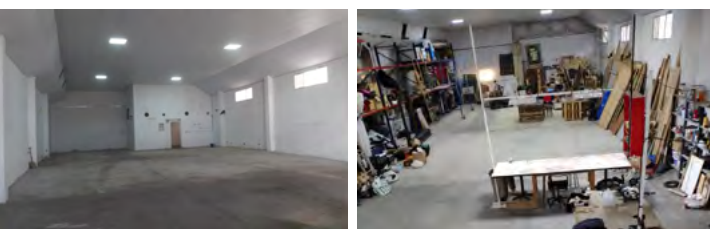
# ADDITIONAL FACILITIES

Facilities centre with 24-hour safety and surveillance equipment, fire control, smart home access and 100% accessible.

- Entrance gate with access for trucks
- Loading and unloading area to the foot of the set
- Area for filming trucks and tents
- Private car park
- An additional 450 m<sup>2</sup> building alongside the set



An area for trucks and tents



Lateral industrial building



**24-hour surveillance**  
in a closed industrial  
estate



**Fire control  
system**



**100% accessible**



**Smart home  
access**

16 escalones FILM SET



# STRATEGIC LOCATION

Located on an industrial estate, with access and connections to the main strategic transport points: located 20 minutes from the airport, 20 minutes from Santa Justa Station and just 2 minutes from the SE-40 ring road.



Dos Hermanas  
(Sevilla)



20 min.  
from the airport



20 min.  
from Santa Justa



1 min.  
from S40 exit





*16escalones* FILM SET

# A UNIQUE HEADQUARTERS IN SOUTHERN EUROPE

**Contact data**

Luis Cañete

[icanete@16escalones.es](mailto:icanete@16escalones.es)

Tel.: +34 630 277 699

*16escalones*  
P R O D U C C I O N E S  
P R O D U C C I O N E S